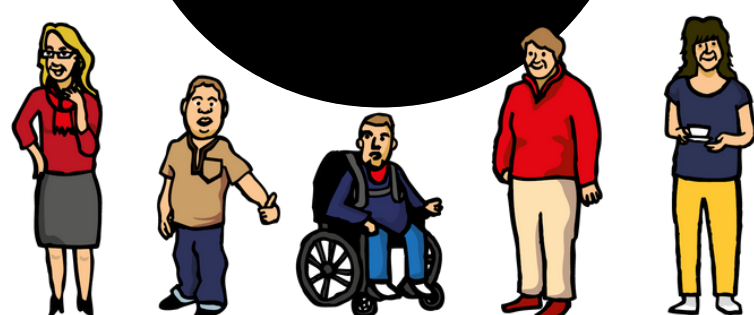


Our impact in 2022



85%

of members rate their child's experience of The Yard as excellent or very good



83%

of parents and carers rate their own experience as excellent or very good



90%

of members rate The Yard staff team as excellent or very good



The Yard is...

a Scottish charity supporting disabled children and young people through centre-based and outreach play services. We help build thriving communities of peer support.

This impact statement is a snapshot of what we achieved in 2022.



Winner of the Edinburgh Chamber of Commerce Business Award for Service Excellence 2022

Family session and membership

Family session forms the heart of our service by offering a place to drop in and play for our members every weekend in Edinburgh, Dundee and Fife. We supported over 500 families at these sessions in 2022. Our Dundee and Fife teams supported over 80 of those families at each of those locations. With an average of eight new families joining us each week, we ended 2022 with 640 The Yard members.

"It really is an amazing place, and we always feel so welcomed and included. The staff are fantastic, and it's the only place where I ever see my little boy relaxed and able to be himself without judgement."

School sessions

Demand for our school sessions continued to grow, with over 1,050 children taking part from over 80 schools in Edinburgh and Dundee during 2022. Our team creates tailored play activities to complement each school group's interests, projects or curriculum. In Dundee, we offer outreach visits, where we bring The Yard into local schools. This allows us to be flexible and fit in with different classes' timetables.

Early years groups

Over 115 children benefitted from our early years groups for 0-5 year-olds in Edinburgh in 2022. In January 2022, we began a new outreach service for this age group, along with their parents and carers, in an area of high need identified within Edinburgh. We also added a second weekly early years session at The Yard from October 2022 to accommodate more families and offer flexibility for our members.

"It's incredibly valuable to have a space where autistic and disabled children can play with other children like themselves in an environment that is built for them. The Yard do fantastic work and there is nothing else like it in Scotland."

Follow us @TheYardScotland

Our impact in 2022

over
20,000

visits to our three sites in 2022



an average of
8

new families
joined The Yard
every week



over
2,000

disabled children
and young people
supported by our
amazing team



Keeping The Promise

Our work with The Promise focused on kinship care. We began working with care experienced children and young people to identify gaps in provision for those who are also disabled. The results will inform national policy and practice.

Outreach holiday respite

Our holiday outreach service offers respite for families during school holidays by supporting disabled children and young people via our specialist team at Oaklands School in Edinburgh. This service is focused on children and young people who have medically complex needs. In 2022, we supported 45 young people by delivering 240 hours of service.

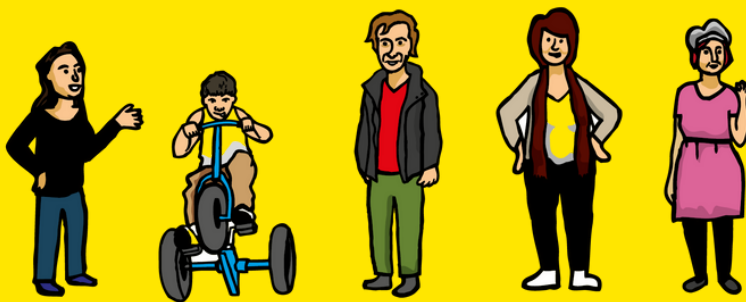
"He's happy and relaxed in the lovely environment. That allows me to relax too, which I don't normally get to do outside of our house. I can't tell you how important a place like this is for families like ours!"

Youth and respite clubs

Our youth clubs supported 79 young people aged 8-25 to attend The Yard independently, building their own friendships and adventures. In response to demand from our families, we introduced our first respite club funded by members' Self-directed Support budgets in June and a second club in September 2022, benefitting 14 young people so far.

Summary Accounts 2021/2022

	2020/21 (12 months)	2021/22 (12 months)
Income	£	£
Unrestricted donations	81,323	106,714
Restricted donations	58,465	
Unrestricted charitable activities	797,829	513,235
Restricted charitable activities	622,446	795,388
Unrestricted fundraising and interest	42,882	99,336
Restricted fundraising and interest	15,380	
Total Income	1,618,325	1,514,673
Expenditure		
Raising funds	853	
Charitable activities	1,294,602	1,542,885
Total Expenditure	1,295,455	1,542,885
Surplus/(deficit) before depreciation and actuarial gains/(losses)	322,870	-28,212
Depreciation	-25,466	-19,543
Actuarial gains/(losses) on defined benefit pension scheme	-103	16,812
Total surplus/(loss)	297,301	-30,943
Summary balance sheet		
Fixed assets	142,883	127,030
Current assets	999,195	789,728
Current liabilities	-253,594	-82,627
	888,484	834,131
Creditors: amounts falling due after one year	-29,446	-6,036
Total net assets	859,038	828,095
Summary funds		
Restricted funds	214,878	74,103
General unrestricted funds	541,697	641,571
Capital unrestricted funds	138,479	125,296
Pension unrestricted funds	-36,016	-12,875
Net funds	859,038	828,095



Edinburgh • Dundee • Fife

22 Eyre Place Lane, Edinburgh EH3 5EH

0131 476 4506 • info@theyardscotland.org.uk • theyardscotland.org.uk

@TheYardScotland